

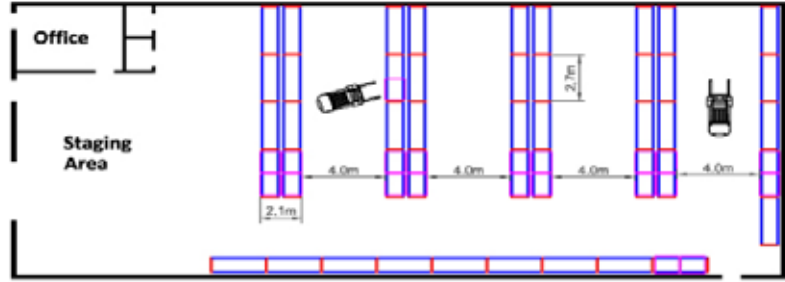


Adjustable Steering Column    4 Post Overhead Guard    19.5kW AC Motor    Ease of Access

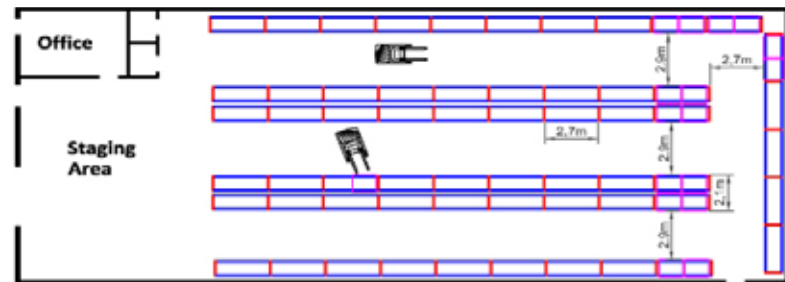
SALES | SUPPORT | RENTAL

# AISLE-MASTER

## COUNTER BALANCE

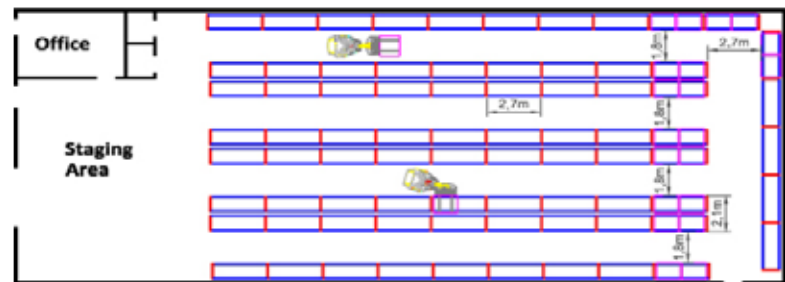


## REACH TRUCK



## AISLE-MASTER

**70% MORE** than Counter Balance  
**30% MORE** than Reach Truck



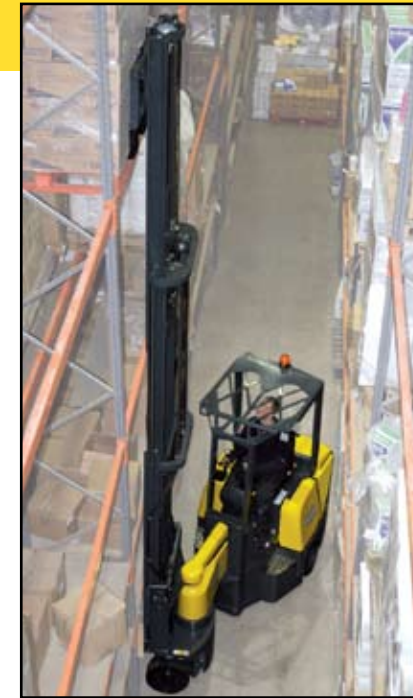
Stack to the Right



Straight a head



Stack to the Left



Increasing Storage-Reducing Costs



**5 YEARS/ 5,000 HOURS  
PARTS WARRANTY**



**REDUCE AISLE WIDTHS  
INCREASE STORAGE SPACE  
CUT WAREHOUSING COSTS  
IMPROVE PRODUCTIVITY**

distributor

Aisle-Master Ltd.  
303 Concord St.  
Greensboro NC 27406  
USA  
TEL: 1877 266 2456

Gallinagh, Co. Monaghan, Ireland  
Tel: 011 353 47 80400 | Fax: 011 353 47 80402

E-Mail: info@aisle-master.com

[www.Aisle-Master.com](http://www.Aisle-Master.com)

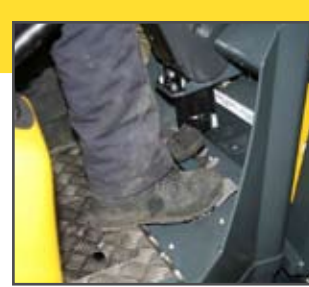
LPG | AC ELECTRIC

[www.Aisle-Master.com](http://www.Aisle-Master.com)

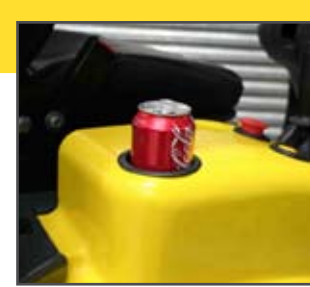
# AISLE-MASTER... THE VERSATILE ARTICULATED TRUCK THAT DOES IT ALL



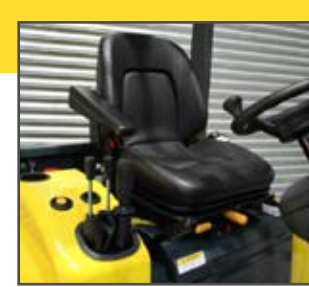
Battery Removal



Pedal- Footguard



Drinks Holder



Cab



39ft

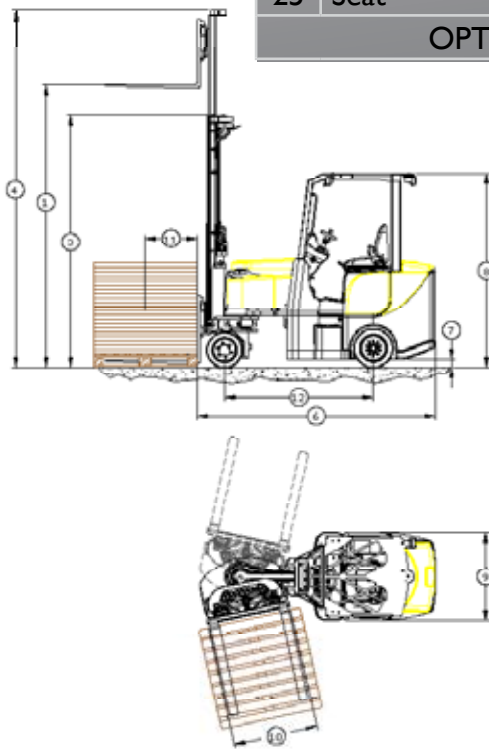


## Features & Benefits:

- Large super elastic tires
- Robust chassis construction
- Integral side shift fitted as standard
- Two motors only. Traction & hydraulic
- Low maintenance
- Indoor & outdoor
- Operator comfort and safety integral part of the machine
- Ergonomically designed to reduce fatigue and maximize visibility
- Full view of both the forks and the load
- Reduced load cycle times and product damage

	MODEL	33E	44SE	44WHE
Description		<b>Electric</b>		
1 Lift Height		187"	187"	278"
2 Free Lift		61"	61"	96"
3 Closed Height		94"	94"	130"
4 Extended Height		221"	221"	312"
5 Mast Range		169"-262"	169"-356"	278"-488"
6 Overall Length		109"	109"	104 1/2"
7 Ground Clearance			2"	
8 Overhead Guard height			89 1/2"	
9 Chassis Width Rear		40 1/2"	48"	55"
10 Chassis Width Front			39"	
11 Load Center			24"	
12 Wheel Base			68"	
13 Seat Height			48"	
14 Mast Tilt (back/fwd)			3° / 1°	
15 Capacity		3300lbs	4400lbs	4400lbs
16 Ground Speed			10mph	
17 Lift Speed (Laden/Unladen)			1.3 / 1.6 ft/s	
18 Front Tire size			16 1/4" x 7"	
19 Rear Tire size			18" x 6"	
20 Gradeability (Laden/Unladen)			12/15 %	
21 Battery Voltage/Capacity		48v / 620Ah	48/775/930 Ah	
22 Weight of Truck less battery		11,350lbs	11,700lbs	11,700lbs
23 Weight of truck including the battery		14,100 lbs	15,210 lbs	15,210 lbs
24 Standard Color		Yellow/Grey		
25 Seat		KAB		

OPTIONAL LIFT HEIGHTS AND FORK LENGTHS AVAILABLE



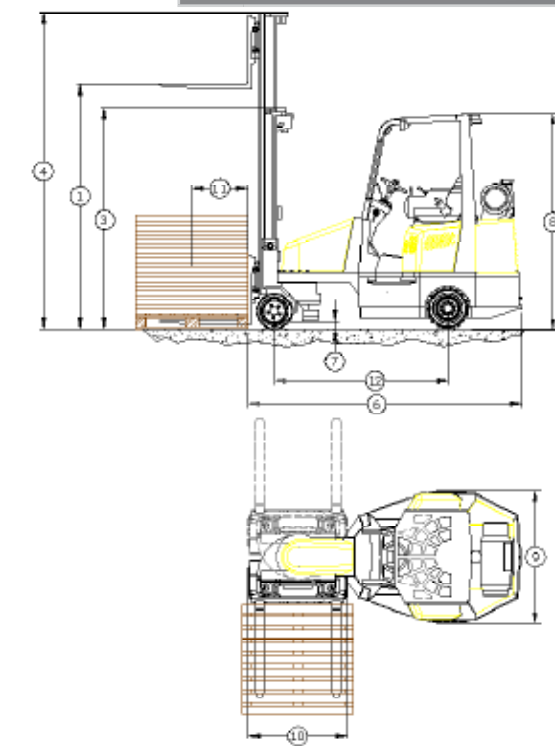
## Features:

- AC Traction motor (19.5 kW)
- 775 Amp and 930 Amp hour capacity batteries
- Ergonomically designed operator's cab
- Full factory fitted customizations options available



	MODEL	44S	44WH
Description		<b>LP Gas</b>	
1 Lift Height		187"	278"
2 Free Lift		50"	96"
3 Closed Height		88 1/2"	130"
4 Extended Height		211"	312"
5 Mast Range		169"-262"	278"-488"
6 Overall Length		111"	111"
7 Ground Clearance			3"
8 Overhead Guard height			91"
9 Chassis Width Rear		53"	59"
10 Chassis Width Front			43"
11 Load Center			24"
12 Wheel Base			74"
13 Seat Height			48"
14 Mast Tilt (back/fwd)			4° / 1°
15 Capacity		4400lbs	4400lbs
16 Ground Speed			8 mph
17 Lift Speed (Laden/Unladen)			1.3 / 1.6 ft/s
18 Front Tire size			16" x 7"
19 Rear Tire size			18" x 8"
20 Gradeability (Laden/Unladen)			15%
21 Engine		3ltr. GM Water cooled	
22 Weight of truck		14,000lbs	15,500 lbs
23 Standard Color		Yellow/Grey	
24 Seat		KAB	

OPTIONAL LIFT HEIGHTS AND FORK LENGTHS AVAILABLE



## Features:

- Hydrostatic drive
- 3 Way catalytic converter fitted as standard
- Closed loop fuel system



Parts Warranty- 5 Years or 5,000 Hours (on major components and subject to conditions)

AC Electric

LP GAS