



COMBiLiFT

Customized Handling Solutions

C11000 GTE



MESH FRONT & REAR



**SPACIOUS
ERGONOMIC
CABIN**

**ADJUSTABLE
DOUBLE
GUIDE ROLLERS**



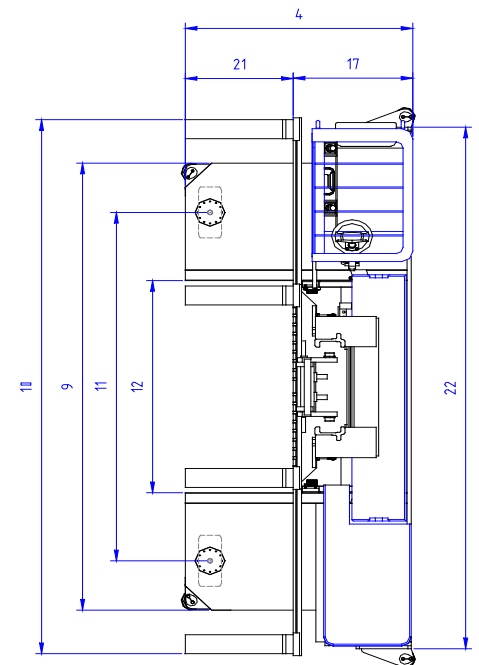
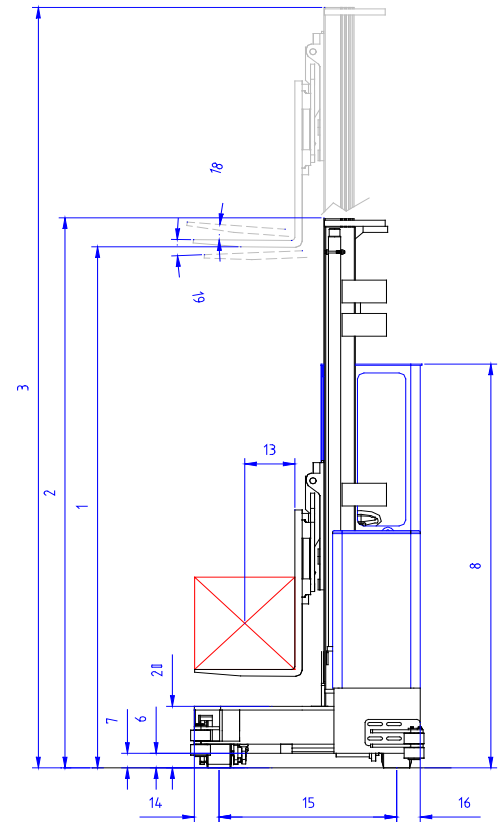
- OTHER FEATURES INCLUDES:**
- Thick Anti-Fatigue floor mat
 - Low entry step
 - All AC technology



SPECIFICATIONS

C11,000 GTE

	Description	Standard
1a	Max. Lift Height	288"
1b	Freelift Height	124"
2	Height Mast Closed	177"
3	Max. (Mast raised)	331"
4	Overall Length	54"
5	Mast Travel	51 ½"
6	Ground Clearance Under Mast	5"
7	Ground Clearance to Centre of Wheelbase	5"
8	Height Over Cab (Without work - lights)	105"
9	Width Across Platforms	116 ¼"
10	Outside Spread of Fork Arms	139 ¼"
11	Wheelbase	90 ½"
12	Frame Opening	55"
13	Load Center Distance	12"
14	Overhang Front	6"
15	Track	42 ½"
16	Overhang Back	5 ½"
17	Length From Face of Fork	30"
18	Forward Tilt	3°
19	Backward Tilt	4.5°
20	Platform Height With Front Lowered	16 ½"
21	Platform Length	24"
22	Overall Width	135"
A	Capacity	11000 lbs
B	Unladen Weight	20500 lbs
C	Maximum Ground Speed	7 mph / 3.5 mph
D	Gradability	10%
E	Battery Capacity	72V 560Ah
F	Fork Section	2" x 6" x 24"
G	350 / 150 – 280 Front Tire	OD 13 ¾" / Width 6"
H	16 x 7 – 12 Rear Tire	OD 16" / Width 7"
I	Standard Color	His-Vis Blue & Grey



FEATURES INCLUDE:

- Low Step In Cabin
- 2 Wheel AC Electric Drive
- Load Sensing Steering
- 4 Wheel Steering
- Tilting Chassis +/- 1/2" At Front AC Technology
- Curved Leading Edges
- Mesh Front and Rear
- Adjustable Double Guide Rollers

Distributed by

COMBiLiFT HQ

Gallinagh, Co. Monaghan, Ireland

T: 011 353 47 80500 | F: 011353 47 80501

E: info@combilift.com

www.COMBiLiFT.com