

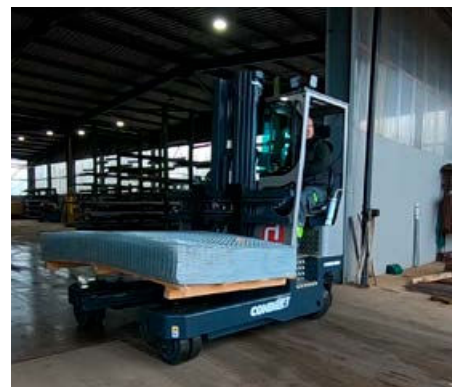
COMBi-MR4 5000 lbs. **Dynamic 360°**

Incorporating our proprietary Dynamic 360° Steering System the Comb-MR4 enables seamless and intuitive directional change while driving.

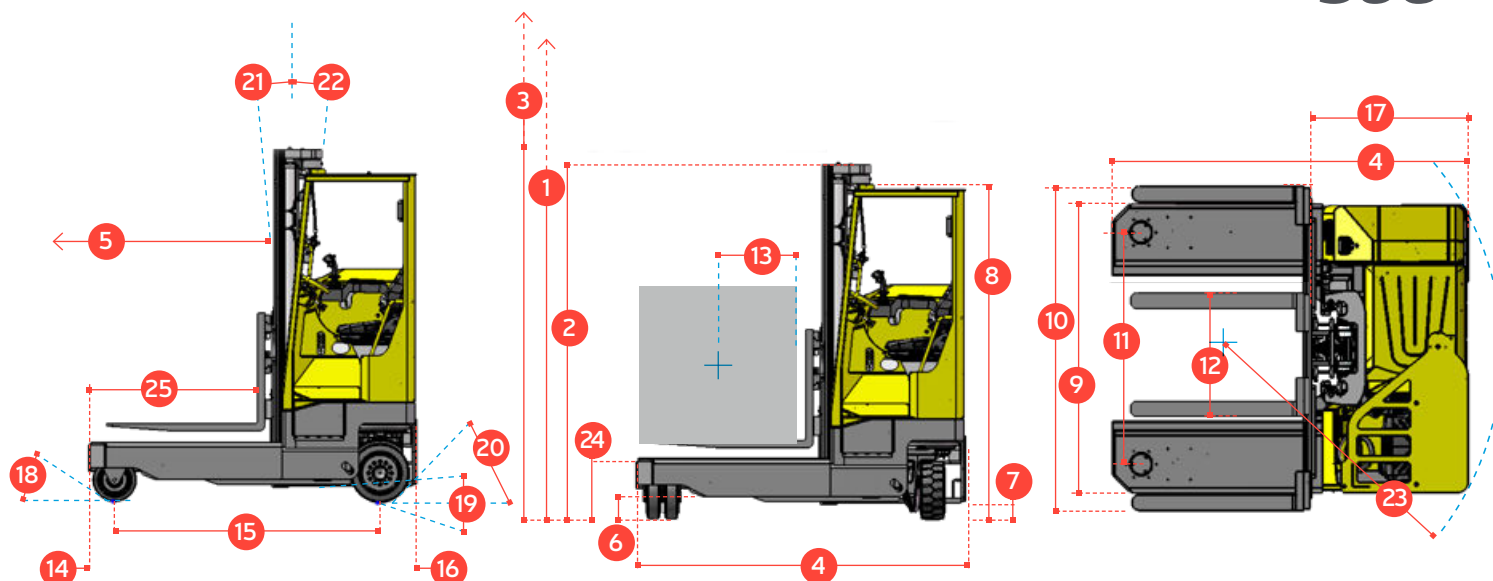
COMBiLiFT

LIFTING INNOVATION

Dynamic 360°



combilift.com

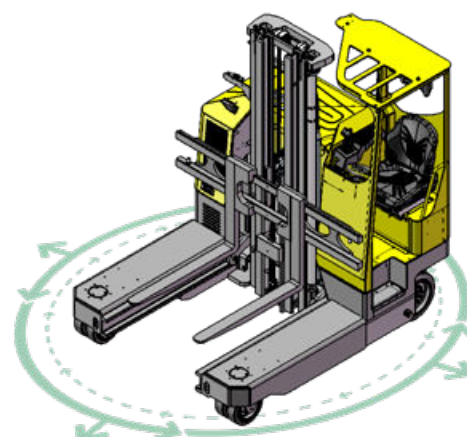


This compact truck features two rear wheel drive with rubber tyres and dynamic 360° 4 wheel steering rotation, contributing to faster procedures for manufacturing, distribution and logistics operations.

REF.	DESCRIPTION	STANDARD	OPTIONAL
1a	Standard Lift Height	159"	220"
1b	Freelift Height	0"	68"
2	Height Mast Closed	105"	103"
3	Max. (Mast raised)	187"	254"
4	Overall Length	90 1/2"	
5	Mast Travel	49"	
6	Ground Clearance Under Mast	4"	
7	Ground Clearance to Wheelbase	4"	
8	Height Over Cab (without work lights)	92 1/2"	
9	Overall Width	77"	
10	Width over forks	83"	
11	Track Front	59"	
12	Frame Opening	37"	
13	Load Centre Distance	24"	
14	Overhang Front	7"	
15	Wheelbase	74"	
16	Overhang Back	10"	
17	Length From Face of Fork	43"	
18	Approach Angle	35°	
19	Ramp Angle	15°	
20	Departure Angle	35°	
21	Forward Tilt	2°	
22	Backward Tilt	4°	
23	Minimum Outside Radius	77"	
24	Platform Height	15"	
25	Platform Length	47"	
26	Chassis Width	73"	

A	Capacity	5000 lbs.	6000 lbs.
B	Unladen Weight	10,000 lbs	
C	Maximum Ground Speed	7 km/h	
D	Gradability	7%	
E	AC Rear Drive	6 kW	
F	Battery	48V x 775Ah	
G	Fork Section	2" x 4" x 45"	
H	Vulkollan Front Tyre	OD 10" / Width 3"	
I	Solid Rubber Rear Tyre	OD 16" / Width 7"	
J	Standard Colour	Yellow & Grey	

Multi-Directional



Features Include:

- Seated Operator Over-Head Guard
- Multi-Direction Operation
- AC Electric Steering
- AC Motor Technology
- Multi-Function Joystick
- Dynamic 360° Steering

Distributed by: